

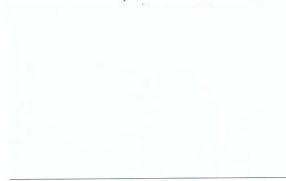


404 Sarah Furnace Road - Imbler, PA 16655 | www.corle.com

Color Selection Guide Featuring TRINAR®



02 - SLATE BLUE



03 - ARCTIC WHITE *



04 - CHARCOAL GREY



05 - BUCKSKIN TAN *



06 - BURNISHED SLATE



07 - PARCHMENT *



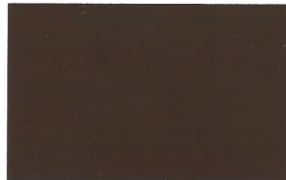
08 - EVERGREEN



09 - ASH GREY *



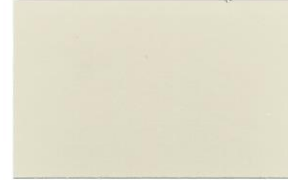
10 - ANTIQUE RED *



11 - CHOCOLATE BROWN



12 - HARBOR BLUE



13 - LIGHTSTONE *

TRINAR® 70% Fluoropolymer

This tough, flexible, strongly-bonded finish provides the following benefits:

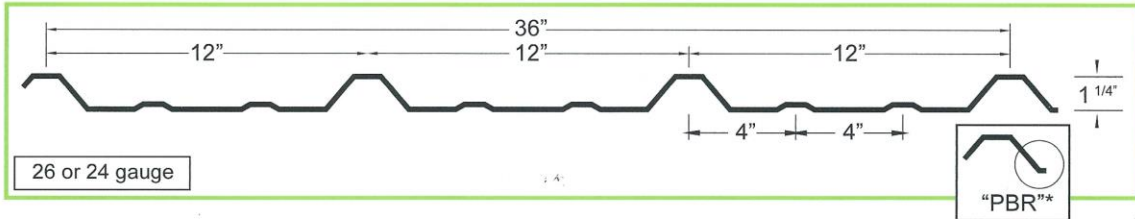
- Excellent UV resistance • Excellent heat resistance • Excellent chemical resistance
- Unparalleled gloss and color retention • Uses only the highest quality ceramic and inorganic pigments for the finest metal finish available
- Resists chalking, fading, chipping and cracking • Resists staining due to airborne pollutants

* TRINAR® CC colors, formulated in TRINAR's® COOL CHEMISTRY® Series, contain ceramic infrared reflective pigments which are designed to reflect infrared energy and comply with Energy Star guidelines.

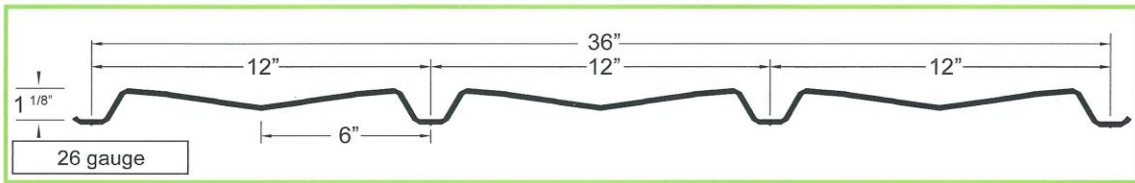
All TRINAR® colors featured in the Corle Color Selection Guide include a 35-year limited warranty.

AkzoNobel

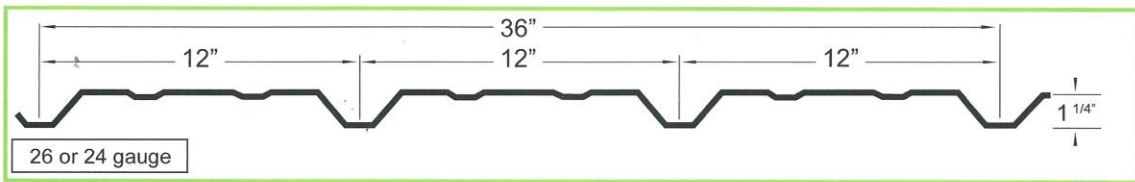
CORLE "R" PANEL



CORLE "A" PANEL



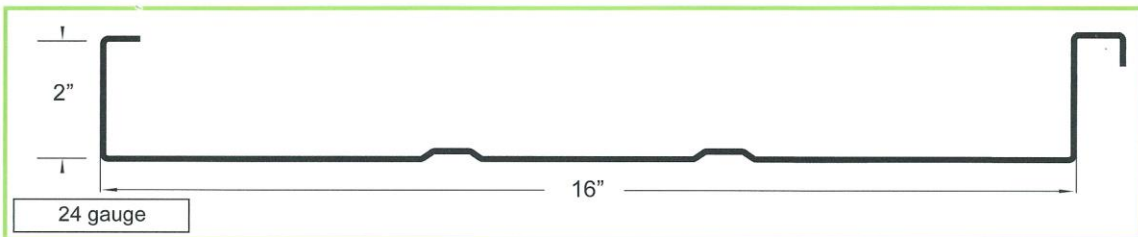
REVERSE ROLL PANEL



SEAM-LOK



VERTICAL-LOK



Visit www.corle.com or ask your Authorized Corle Builder to view the Corle Architectural Manual for complete panel details.
**"PBR" used on roof and wall panels. †Corle "A" Panel and Reverse Roll Panel are available for wall panels only.