



Experience the **RIDE.**

*Your dreams are the beginning of  
the R.I.D.E with Apex.  
Your experience with Apex promises  
to be unmatched.*



- ▶ Residential
- ▶ Light/Low Rise Commercial
- ▶ Existing Structures & Barn Renovations
- ▶ Agricultural
- ▶ Equine

[www.apexstructuresllc.com](http://www.apexstructuresllc.com)

STYLE ▲ OPTIONS ▲ COLOR ▲ LAYOUT

# EXPERIENCE THE RIDE



## Welcome to APEX STRUCTURES

*Apex Structures is at the top of our game when it comes to exterior renovations and professional new constructions. We are Lancaster County's premier resource for residential, commercial, and agricultural buildings and we possess a passion for true craftsmanship and customer satisfaction.*

*We integrate today's best tools and most modern framing methods to construct functional, long-lasting structures and give our clients the dynamic results they have been searching for.*



### RESPOND

What are your needs, wants and dreams? Being responsive starts with you, here Apex will learn what you have in your heart and mind for your project. Whether it's new construction or a renovation, the Apex promise will be to **RESPOND** to your ambitions.

### INNOVATE

Your thoughts and design will push Apex to get creative to support your needs. When traveling through the innovation portion of the RIDE, your designs will be the foundation of Apex's solutions. You help **INNOVATE** and detail your dream to perfect your master piece.

### DELIVER

Your design starts to come to life as the delivery phase is reached. Apex will bring a talented team of construction professionals to your site to construction your building just as you have planned. The collaboration during the response and innovation phases including project scheduling and timeline ensure that your needs will be met as Apex **DELIVERS** your new building or renovation.

### EXPERIENCE

You are our greatest asset. Your total experience with Apex is the most important part of our relationship. As your needs, wants and dreams are met through all of the hard work to get to this point, it solidifies your **EXPERIENCE** with Apex as one you will brag about for years to come!

R

I

D

E

We incorporate the **R.I.D.E** philosophy – Respond, Innovate, Deliver, and Experience – to take our clients on a journey that starts with their dreams and ends with a new, high-quality building or structure. We make it our mission to create a more personalized interaction with all our clients; understanding their unique needs and fulfilling their designs down to the last detail. Apex Structures does what is best for our clients, no matter what the request. We have adopted R.I.D.E as our business plan and our motto to give home and business owners a strong say and helpful recommendations in the realization of their designs.

# GALLERY



## **RESIDENTIAL BUILDINGS**

Your new garage, hobby shop, equipment storage or horse barn is designed specifically to meet your needs, wants and dreams. From a basic storage space to a total turn-key "man cave" your needs are met through the R.I.D.E!



## **COMMERCIAL BUILDINGS**

Your business is a major part of your life and needing to add new space, from warehousing to turn-key office space, due to new business growth is a major decision. Your needs and wants are the start for planning and through Apex's R.I.D.E you can see your design becoming a profitable end result.

## **Existing Structures & Barn Renovations**

If you already have an existing barn, commercial building or post frame building that's needs to be just freshened up or a total overhaul to make it more efficient for today's needs let us know about it. Your wish is our command and it all starts with a R.I.D.E with Apex from Responding to Experience your renovation project becomes reality.

- ▶ Residential
- ▶ Light/Low Rise Commercial
- ▶ Agricultural
- ▶ Existing Structures & Barn Renovations
- ▶ Equine



[www.apexstructuresllc.com](http://www.apexstructuresllc.com)

# ROOFING & RELATED

## FABRIL® GRANDRIB 3 PLUS

### PANEL SPECS

- 36" Coverage with  $\frac{3}{4}$ " Rib Height
- Fire Resistance Rated & Hail Impact Tested
- High Performance Enduracote® Paint System Features:
  - Energy Star® approved standard color offering
  - Improved fade resistance
  - Improved gloss retention
  - Improved scratch resistance
- Custom Cut to Lengths Up to 40'
- Anti-Siphon Sidelap Design
- Excellent Wind Uplift and Snow Load Ratings

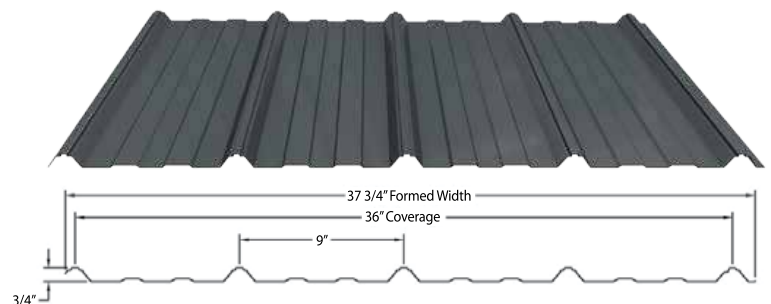
### SUBSTRATES

- 29 Gauge Structural Quality Full-hard Galvanized Steel
- G90 Galvanized



### Asphalt Shingles

Three tab or Architectural profile asphalt shingles are available on all of our projects. These shingles are installed to match your home or other existing structure or for a "new look" on your property. Installed over 2' o/c trusses, 5/8" plywood and felt paper much the same as your home.



## The Enduracote® PLUS Warranty for Steel Roofing

- Lifetime film integrity for walls & roofs
- 30-year against fade & chalk for walls and roofs
- 15-year edge rust against acid rain
- 25-year non-perforation against acid rain for walls; 20-years for roof

*For profiles: Grandrib 3® PLUS*

# SIDING & OPTIONS



## Wood Board and Batten

1"x12" Pine or Cedar board vertical or horizontal siding with all wood trims to accent this siding choice. Wood siding is a throwback to the most traditional siding methods. We offer other profiles and wood species to meet your wants other than the "board and batten", just ask and we will find what you're looking to match. Paint or water seal is optional along with a vapor barrier behind your chosen siding.



## Painted Steel

The siding panel has similar characteristics as the roofing panel. The siding has a G-60 substrate with a 30-year warranty and it is offered with same color choices as the roofing.



## Vinyl Siding

Many profiles, widths and colors are available to achieve the appearance you are seeking. Horizontal as well as vertical sidings are installed over 7/16" OSB with house wrap and color complimentary selections in vinyl trims much the same as standard home construction today.



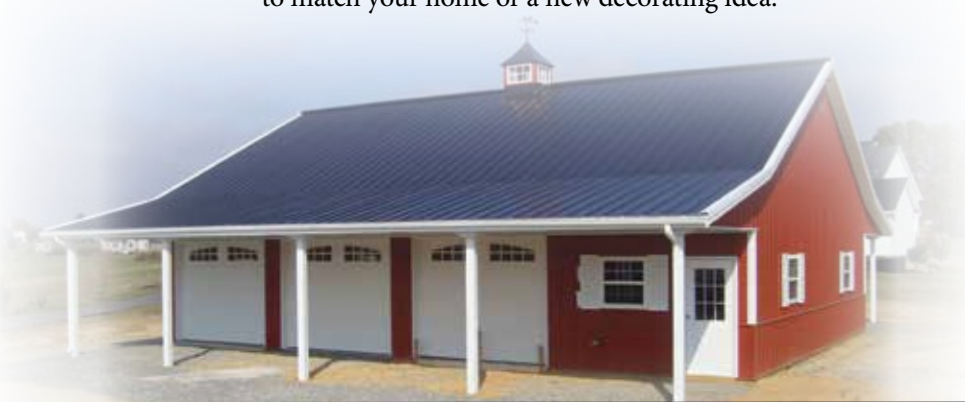
## Cement Fiber Plank Siding

Cement composite horizontal or vertical siding. Pre-painted or custom colors available. Installed over 5/8" Plywood sheathing and optional "House Wrap". Resembles traditional vinyl or wood sidings but is considerably more durable and can be custom painted to match your home or a new decorating idea.

## The Enduracote® Warranty for Galvanized Panels

- Lifetime film integrity for walls, steel siding and roofs
- 30-year against fade & chalk for walls and roofs
- 10-year edge rust against acid rain

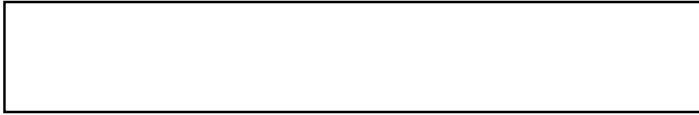
For profiles: Grandrib 3®, 5V Crimp, ProClad, StrongClad, Prime Rib



[www.apexstructuresllc.com](http://www.apexstructuresllc.com)

# FABRAL®

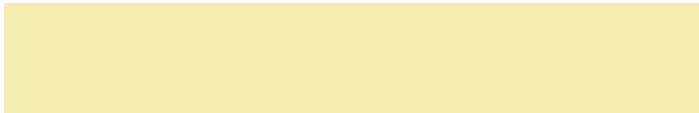
## ENDURACOTE® COLOR CHART



BRITE WHITE 824 **IR=.60**



WHITE 899 **IR=.54**



IVORY 883 **IR=.62**



LIGHT STONE 887 **IR=.51**



TAN 855 **IR=.38**



COCOA BROWN 856 **IR=.35**



DARK BROWN 859 **IR=.30**



ANTIQUÉ BRONZE 854 **IR=.29**



CARIBBEAN BLUE 881 **IR=.27**



GALLERY BLUE 826 **IR=.29**



BRICK RED 898 **IR=.31**



BRITE RED 845 **IR=.32**



CLASSIC BURGUNDY 853 **IR=.26**



HICKORY MOSS 870 **IR=.36**



PATINA GREEN 893 **IR=.38**



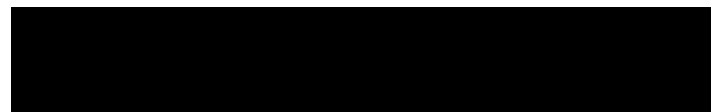
EVERGREEN 875 **IR=.27**



LIGHT GRAY 889 **IR=.31**



CHARCOAL GRAY 851 **IR=.35**



TRUE BLACK 882 **IR=.30**

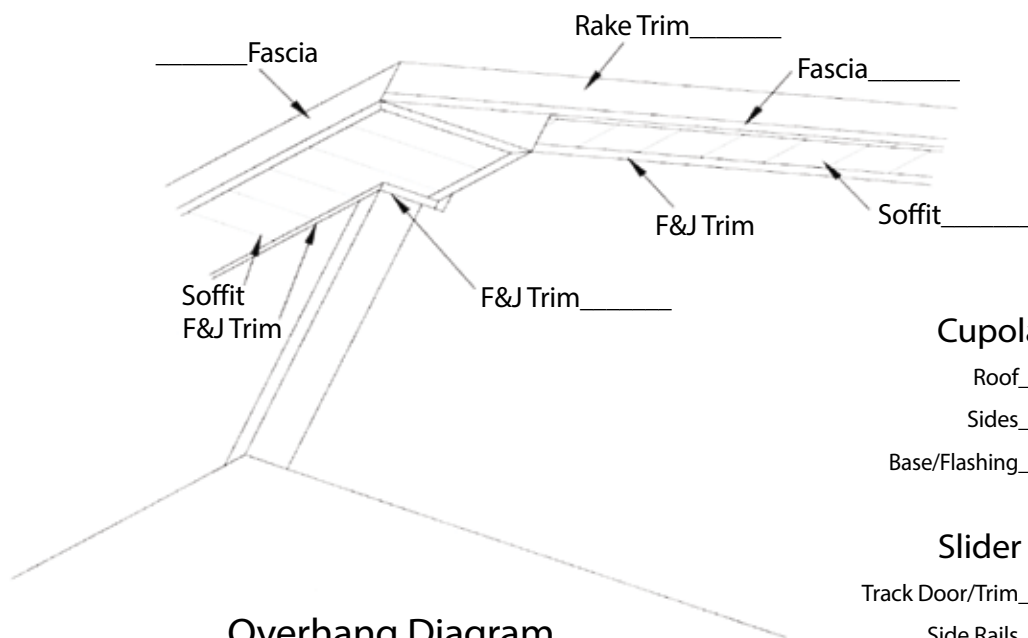
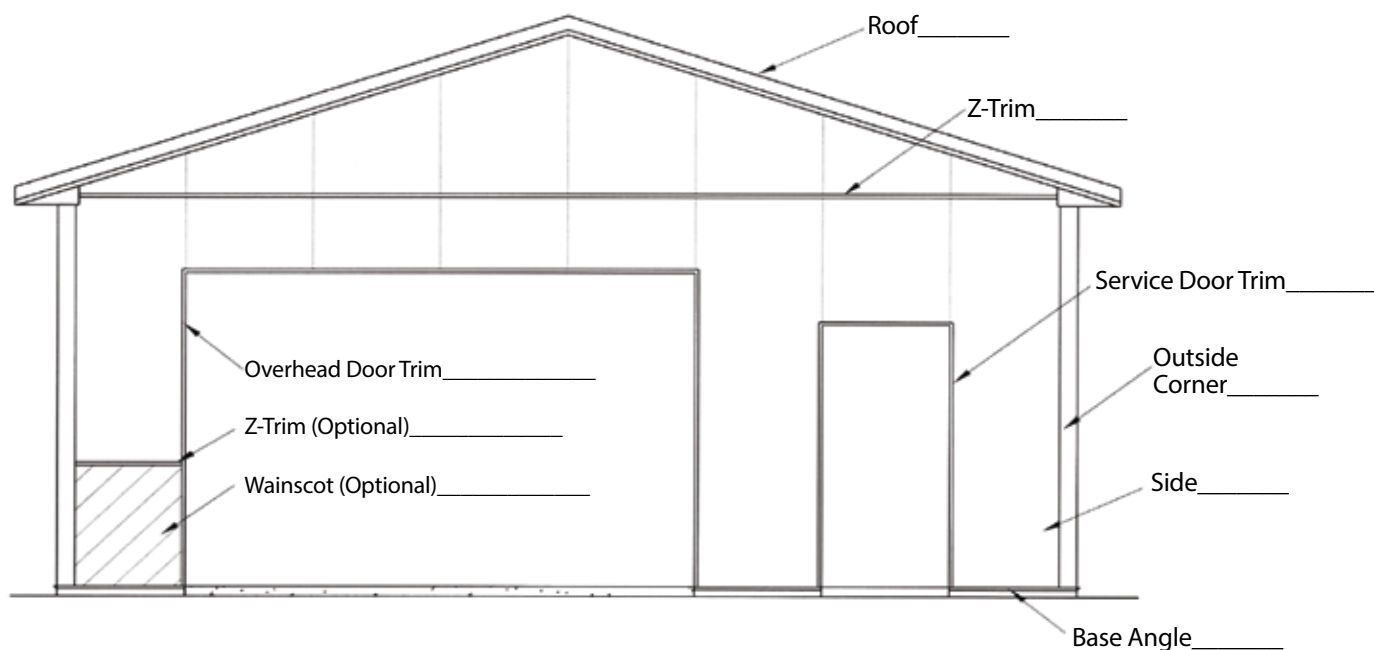


HARTFORD GREEN 821 **IR=.29**

Colors are as actual as allowed by the printing process. Actual metal samples are available; request samples prior to installation.

**Note: colors vary depending on position and angles.**

# COLOR SELECTION



Overhang Diagram  
\*For Informational Purposes Only\*

## Cupola Color Chart

Roof \_\_\_\_\_  
Sides \_\_\_\_\_  
Base/Flashing \_\_\_\_\_

## Slider Color Chart

Track Door/Trim \_\_\_\_\_  
Side Rails \_\_\_\_\_  
Track Door Panel \_\_\_\_\_

Authorized Signature \_\_\_\_\_ Date \_\_\_\_\_

# BUILDING OPTIONS



## 12" Eave Overhang

A roof overhang of 12"/18"/24" has several structural, building functionality, and aesthetic attributes. Vented soffits, when sized correctly, with vented ridge cap improves your buildings' temperature control. Condensation and moisture remediation are a definite variable in the long-term performance of your roofing and siding choice. Overall proper building ventilation is highly recommended to increase the lifespan of your new Apex structure. Overhangs also enhance the appearance of your new building and often times can be matched to the overhang on your home.



## 12" Gable Overhang



## Rain Gutters & Downspouts

5" or 6" "K" Style seamless gutters is an option many property owners choose to add to their design. Gutter and downspout size and spacing is determined by the roof area and slope of the roof. Colors are available to either compliment or closely match your roofing/siding/trim color shades.



## 36" Cupola with Weather Vane

Cupolas and weathervanes are a very traditional look that are most times customized for your project or hobby. They are available in a standard steel side and roof to wood sides with glass and a copper roof. Most cupolas are decorative vs. functional. But ours can be sized and installed to increase the ventilation needs of your barn or garage.



## Snow Guards

Snow guards are usually installed where Mother Nature tends to be real nuisance; such as above garage and entry doors. Installation and profile are designed specifically for your project and needs.



## Wainscoting

Various materials in color, size and texture are commonly used to accent your new or existing building. Aesthetics are the main goal, such as adding a different material or texture to more closely resemble your home or other prominent existing building.



## Moderra® Brick Masonry Siding

Mortarless masonry product that is "dry stacked" and attached to your building with a unique clip and screw system. The finished appearance, color and texture resemble a traditional brick façade but at a much more economical price.

# BUILDING OPTIONS



## Standard Lean-To

Lean-to and/or porch roof extensions are an economical way to add more covered area to your project. Many sizes, areas and options are available because they are specifically designed for your needs and aesthetic function.



## Deluxe Lean-To



## Stone Base

When excavating your site make sure to include a solid stone base for under your concrete floor and/or driveway. The long-term performance of the concrete or asphalt starts with this stone base being correctly designed and installed. Apex can provide you with an estimate for your project, just ask us for our opinion of what you'll need.



## Skylights

Vinyl or fiberglass skylights are available to match our steel roofing profile. They are an economical way to add natural light to your building. Many sizes and transparencies are available depending on your needs and budget.



## 24' or 48' Sidelights

The same material as the skylights but are installed on the top two feet of the side wall. They come in clear or white.



## Concrete Floor

Your concrete floor will be specifically designed for you. The depth, psi strength, expansion joints and sealer are all part of providing a professional concrete floor. Let Apex provide you with an estimate for your floor to put that finishing touch on your project.



## Stone Veneer Siding

Cultured manmade cement stone veneer. Installed over 3/4" plywood sheeting, vapor barrier and stucco skim covering. These "stones" are manufactured to resemble actual stone color and texture and are widely used throughout the construction industry today.



## Perma Column

If you prefer concrete in the ground, we can install concrete columns in the ground and connect our posts to the column for a lower cost than a block foundation.



## Glu-Lam Posts

Glued laminated timber that is a type of structural timber product composed of several layers of dimensional timber bonded together with durable, moisture-resistant adhesives.

# OVERHEAD DOORS



◀ Arched Frame Openings

◀ Carriage Style Garage Door



◀ Garage Door Opener

## Standard 9' x 8' Door ▶

The standard residential doors are a raised panel door that comes in non-insulated and insulated styles. The insulation value of the door is 7.8. Both the insulated and non-insulated doors are available in white, almond, taupe and brown.





### **Dutch Corner Frame Out**

Has the top two corners cut off at 45° angles. These are also frames with wood and covered in painted steel, which gives your building a more residential look.



### **Solid Sliding Door**

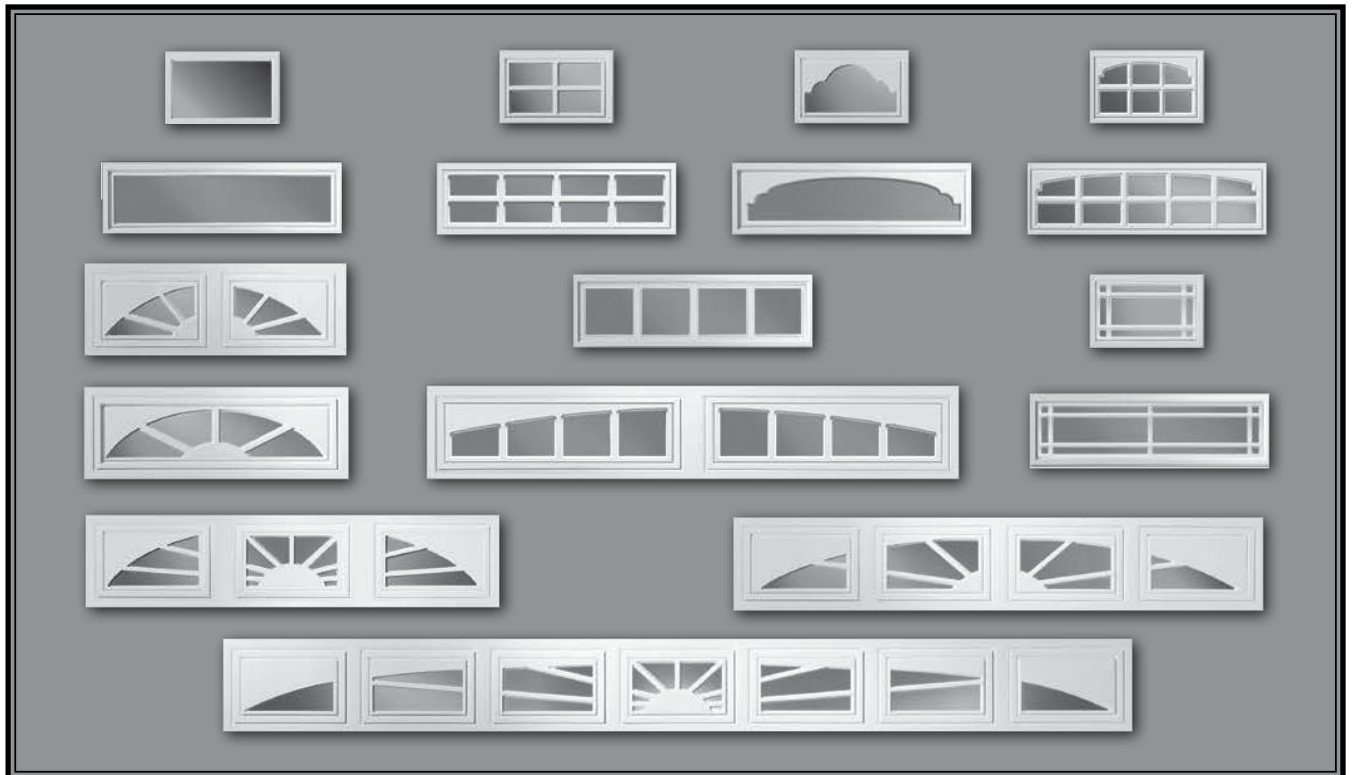
Wood or steel framed sliding barn style doors are an economical way to add large openings to your building without needing additional ceiling height to function. Standard covering is matched to your siding choice. Cross bucks, as pictured, are optional for an additional cost.



### **Dutch Doors**

## **Window Options**

Most residential doors have one of these window designs. Other shapes, sizes and configurations are available just ask and we will research what you may be looking to match.



# WINDOWS & ENTRY DOORS



**Horizontal Slider Window**

*Horizontal, single hung, double hung and/or casement style insulated windows are available in many colors, architectural shapes and sizes. Fixed glass, non-operable and geometric shapes are also options. Shutters to match your home can be added as well as grids and screens.*



**Single/Double Hung Standard Window**



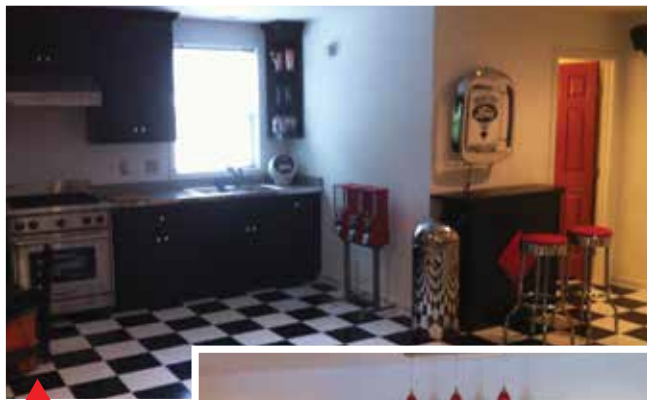
*Our standard doors are commercial grade with a steel door and metal jamb. The jambs and doors slabs are available in 4 standard factory painted colors or you can order a custom color to match the color scheme you have chosen for the entire building. Door latches and hardware are commercial grade and matched to your specific needs and use requirements.*

**9-Lite Glass Entry Door**

**Solid Entry Door**



# INTERIOR OPTIONS



**Drywall**



**Wall and Ceiling Insulation Packages**

**R-19 Batt Wall Insulation**

**RR-30 or R-38 Blown or Batt Insulation Ceiling and Roof Insulation**

**CondensStop® and Board Insulation for Condensation Control**

**Double Bubble**

A vapor barrier that is installed under the steel and is mainly used on the roof. It prevents the roof from sweating.

**1/2" & 1" Thermax™ Insulation**

A 4' x 8' foam board with foil on both. It is installed under the steel and is designed to keep the "chill" out of the building. The 1/2" boards have an R-value of approximately 3.6. The 1" boards have an R-value of approximately 7.2.



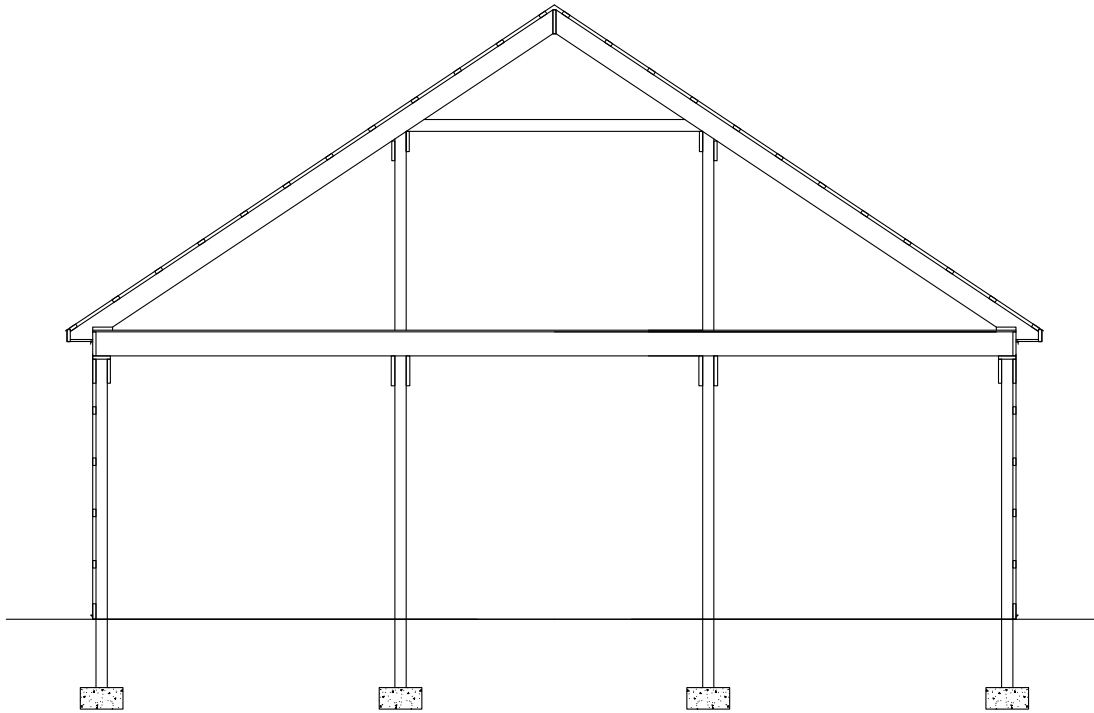
**Metal Wall and Ceiling Panels**



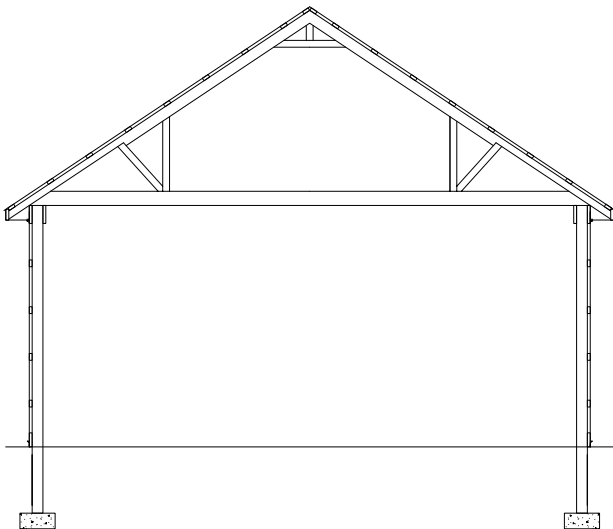
**Metal Ceiling and Trap Door**

Finish off your ceiling with metal liner panels and a trap door for easy access.

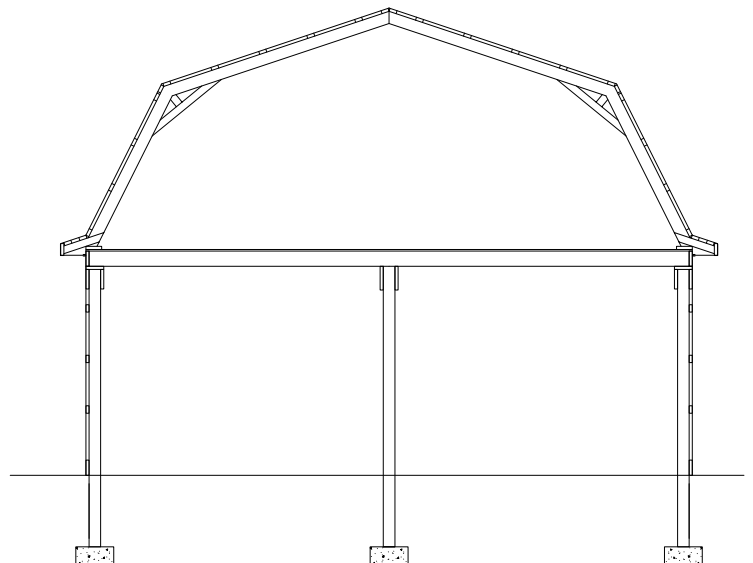
# TRUSS DESIGNS



**Rafted  
Wall Section**



**Attic Truss  
Wall Section**



**Gambrel Truss  
Wall Section**

# STONE & REGULATORY ITEMS

*Depends On Township Requirements*



## Engineered Plans and Permitting

Rest assured that all of Apex Structures' projects are structurally designed to meet IBOC and the National Building Code. Your local permitting officer may require your plans to be reviewed, signed and sealed by a licensed Structural Engineer or Architect. Typically that professional review by our Engineer or Architect is more of a formality and small additional step toward you receiving your building permit. The cost of this review varies by project due to size, scope and local code requirements beyond our standard design.



## Footing Design and Materials

Our standard footing system is designed for each project specific to soil conditions, snow design load, building span and door opening size. An upgrade to "Redi-Mix" concrete footings may be necessitated by your local building permit department.



## General Contracting or Assisted GC Services

Apex does offer total turn-key construction or a level of assisted GC services for most our projects. Please consult with us to determine your needs and abilities and our availability to complete your entire project from site clearing and excavation to handing you the keys upon completion of your new building.



222 S. Brookefield Lane ▲ New Holland, Pa 17557

email: [info@apexstructuresllc.com](mailto:info@apexstructuresllc.com)

**1.800.449.9079**

**[www.apexstructuresllc.com](http://www.apexstructuresllc.com)**

- ▶ Residential
- ▶ Light/Low Rise Commercial
- ▶ Existing Structures & Barn Renovations
- ▶ Agricultural
- ▶ Equine



222 S. Brookefield Lane ▲ New Holland, Pa 17557  
email: [info@apexstructuresllc.com](mailto:info@apexstructuresllc.com)

**1.800.449.9079**

**[www.apexstructuresllc.com](http://www.apexstructuresllc.com)**